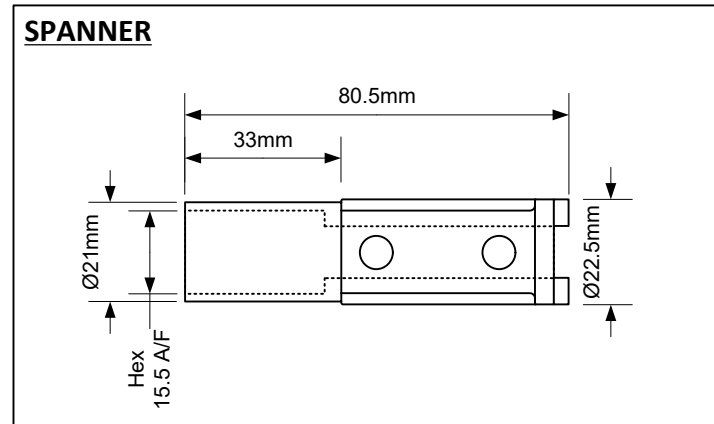
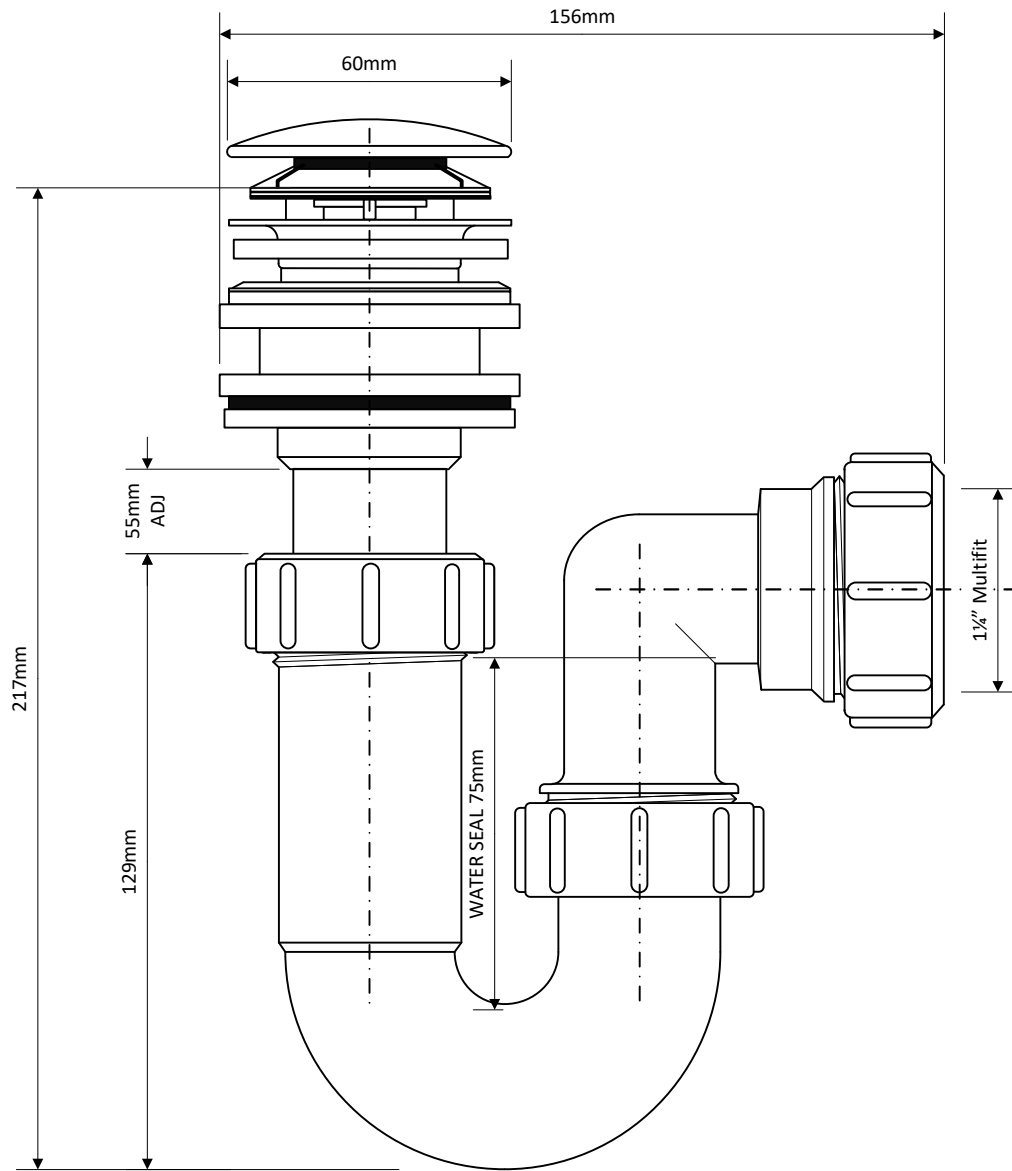


Code:

BK2



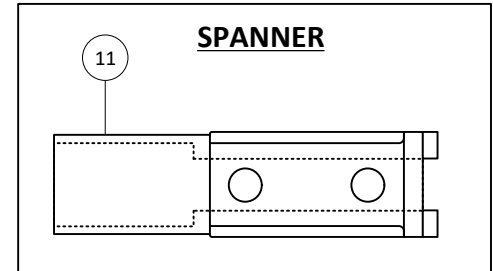
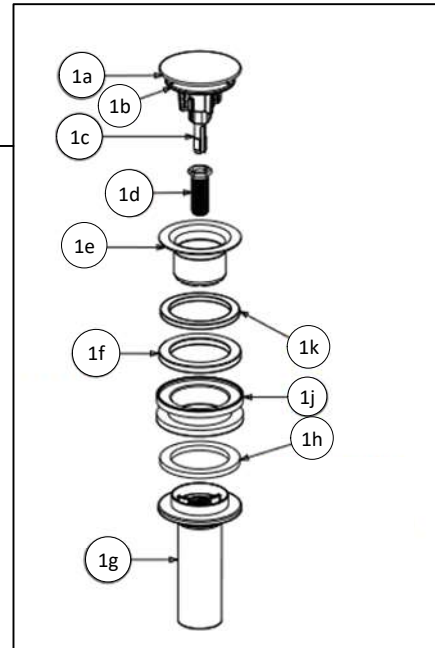
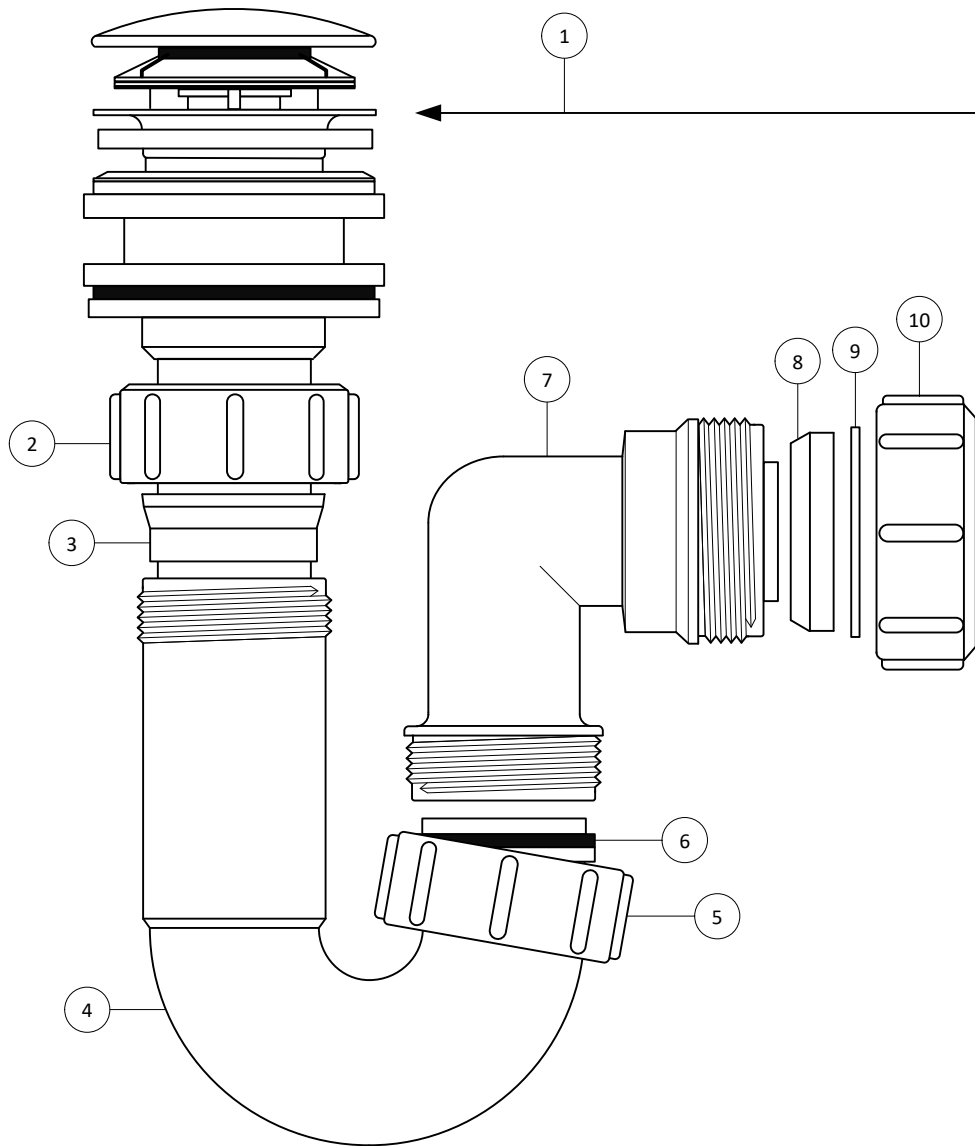
©  
McALPINE

Drawing verified correct as of:

DRAWN BY	TC	REVISED	FILENAME
		SCALE	DATE
		1: 1.6	BK2.VSDX 04.05.21

Code:

BK2



No.	Qty	Code	Material
1	1	P-CWP60-EC	
1a		CP60-ABS-SS	TBA
1b		P-RW-CLICKSEAL	Nitrile
1c		CLICKERSWITCHCN	Various
1d		BSWFERRULE-32	Brass
1e		P-F-60MINI-DOM	Stainless Steel
1f		60-44-65-WST-SEAL	Silicone
1g		STALK-AA10M12-NC	Polypropylene
1h		RW-58X43X4	TPE
1j		CWP60SPACER	Polypropylene
1k		P-SPW-60MM	Polyethylene
2	1	S8B	Polypropylene
3	1	S13-ISON	TPE
4	1	1.25-ADJ	Polypropylene
5	1	S8A	Polypropylene
6	1	RW1	EPDM
7	1	SA10-OUT	Polypropylene
8	1	RWM1	TPE
9	1	PWM1	Polypropylene
10	1	S8M	Polypropylene
11	1	SPANNER-BATHOF	A.B.S.

©  
McALPINE

Drawing verified correct as of:

DRAWN BY

TC

REVISED

SCALE

1: 1.6

FILENAME

BK2.VSDX

DATE

04.05.21